



**New Staff Member:  
Steffanie  
Sperry, Ph.D.**



Dr. Sperry is a licensed clinical psychologist specializing in:

- health psychology
- eating and weight disorders
- childhood behavior problems
- depression and anxiety for children and adults.

**New Staff Member:  
Melissa DeGeso-  
Jones, Psy.D.**



With over 10 years of experience, Dr. DeGeso-Jones joins Rice Psychology Group as a psychology resident under the supervision of Dr. Rice. Therapeutic services include, but are not limited to:

- trauma-centered

**Greetings!**

As we embark upon the Fall of 2013, there are all kinds of exciting new happenings at RPG. We are thrilled to have an eating disorder expert (Dr. Steffanie Sperry) and a trauma expert (Dr. Melissa DeGeso-Jones) on board. We have expanded our group offerings. Brain Train has had an overhaul and is now called Mind Power Builder.

Dr. Norrine Russell has generously entrusted Rice Psychology Group with leading the [ADHD Parent Support Network of Tampa Bay](#) . We can't wait to bring more wonderful speakers and continue to provide support to those touched by ADHD.

We will now have 2 beautiful office locations, one North and one South! One very exciting feature in our new North Tampa space is a 2-way observation window so that parents can observe testing and other sessions as appropriate.

And finally, Luca has returned to us after 2 years away as an autism service dog. His white eye was repaired yesterday and we are thrilled to have him back in the RPG family.



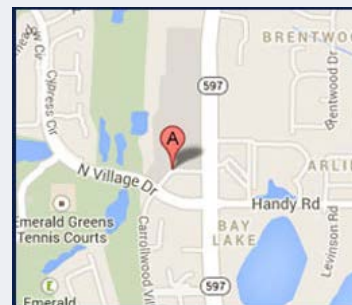
Hope to see you soon,

Wendy

**We're Moving!**

**New North Tampa Location**

We are officially moved into our new NORTH TAMPA space and will be open on Friday, August 16th!! We are in the Landmark Office Building just "off" the corner of North Village and Dale Mabry, behind Bank of America and the plaza with Chuck E. Cheese and Carmel Café. Our private entrance is located on the south side of the building that faces North Village Drive. Look for the LARGE BLUE AWNING....Here is our new address:



**14310 N. Dale Mabry  
Suite 150  
Tampa, FL 33618**

- therapy
- solution-focused crisis intervention
- non-directive play therapy
- cognitive behavioral interventions for individuals, couples, families and groups

**Congratulations, Emily Hudkins,**



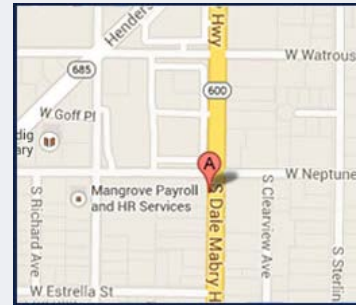
**Ph.D.**

Rice Psychology Group would like to wish Dr. Hudkins well on her upcoming future endeavors. She recently received a grant through the University of South Florida, and (on a personal note) is expecting the arrival of her child any day.



Rice Psychology Group will still have our South Tampa location on the corner of Neptune and South Dale Mabry:

**1501 South Dale Mabry Highway  
Unit #A-6  
Tampa, FL 33629**



## New Groups Sessions

### North Tampa Groups:

- Social Stations: Grades 2-4 Coed
- Social Steps: Grades 5-6 Coed
- Managing Middle School Madness
- Reflections: High School Girls



For more information, click [here!](#)

### South Tampa Groups:

- Tool Time: PreK and Kindergarten Coed
- Managing Middle school Madness
- Teen and Adult Eating Disorder Groups

For more information, click [here!](#)

### New Eating Disorder Groups:

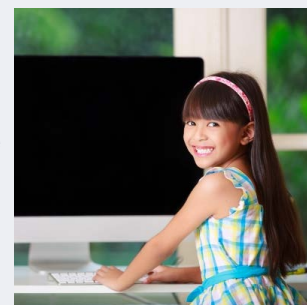
If you've struggled with eating or weight problems, noticed problematic eating patterns in someone you love, or have a poor body image, one of our new Eating Disorder Groups could be for you! For more information, click [here!](#)

## New Blog

### Social Media Safety for Children

As parents, the wellbeing and safety of your children is your first and foremost concern. You keep up with what they are doing, what their grades are, who their friends are, and where they go. But have you considered what they are doing and who they are interacting with on social media?

Read more [here!](#)



Sincerely,

Wendy B. Rice, Psy.D.  
Rice Psychology Group



Carrollwood  
14310 N. Dale Mabry, Suite 150 | Tampa, FL 33618 | 813-969-3878

South Tampa  
1501 South Dale Mabry Highway, Suite A-6 | Tampa, FL 33629 | 813-251-3878

